



KMTT PRE-TOURNAMENT MEETING

CLASSIC SANDUSKY BAY -Shelby Ramp (Sandusky City)

IMMEDIATELY AFTER REGISTERING GET IN THE WATER

REMEMBER WE DO NOT ALLOW PENETRATING CULL SYSTEMS.

DAY #1 BOAT NUMBERS (ALL) Due in at 5:30pm

DAY #2 BOAT NUMBERS (ALL) Due in at 4:30pmT

THE CHECK-IN Process: WE WILL BE SET UP NEXT TO THE WATER AND ABLE TO SEE AS ALL TEAMS COME IN FOR WEIGH IN. IF YOU ARE LATE 1 POUND PER MINUTE UP TO 5 MINUTES LATE BEFORE DQ. 14 Inch minimum size limit.



We will be looking for late boats be at the ramp immediate area by check in times. If anyone sees a late boat idling in please report them to us and notify someone around you to verify them being late too.

YOU MAY WEIGH FROM WATER OR TRAILER YOUR BOAT SECURE YOU'RE CATCH AND THEN PROCEED TO THE WEIGH-IN AREA. You Should Fill Your Bag As Full As Possible With Live Well Water and Proceed To The Weigh-In Area.

A COURTESY STATION HAS BEEN PROVIDED FOR BUMPING YOUR FISH please check your board to ours. **We will not accept excuses that yours are different.**

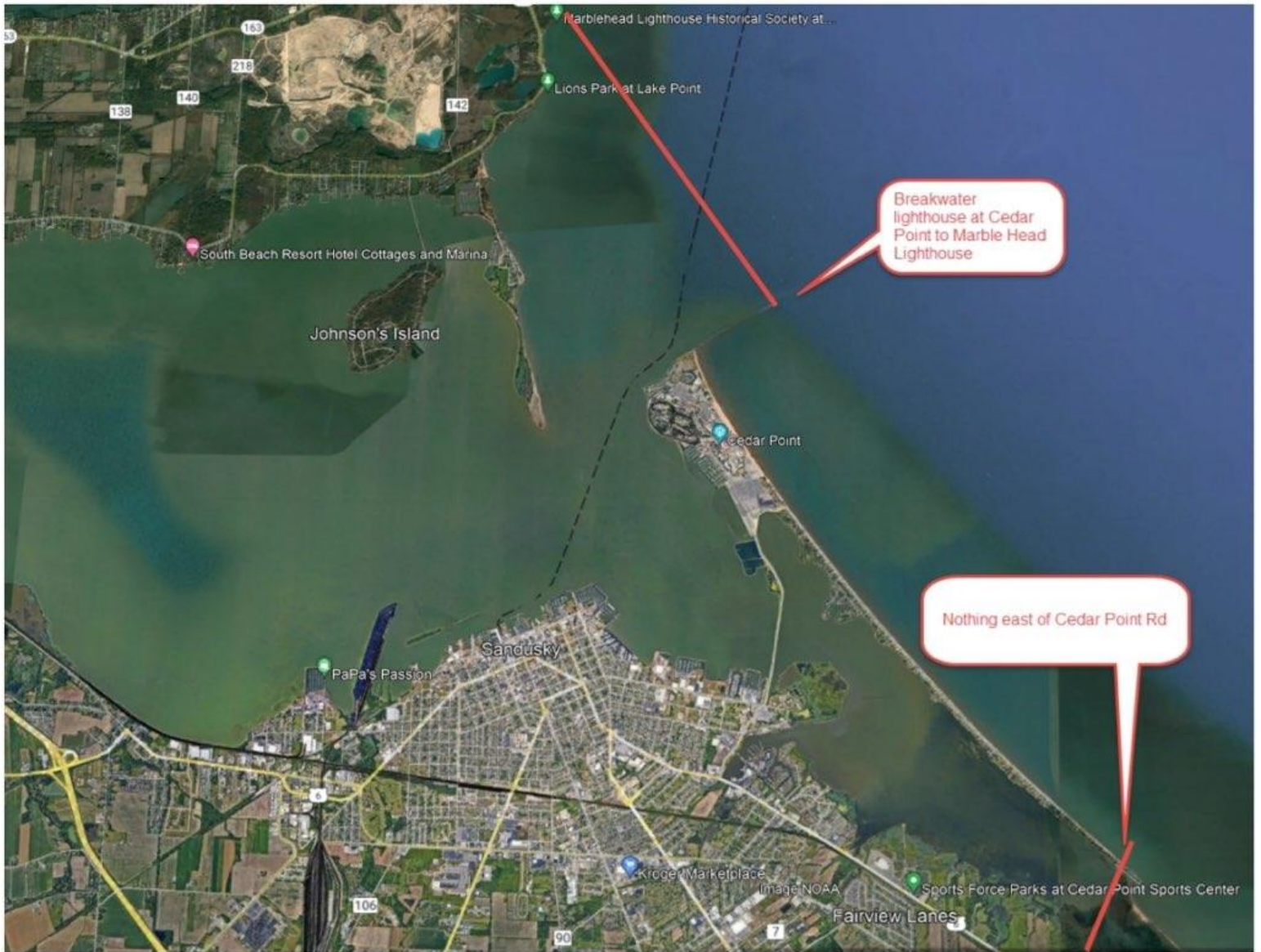
DUMP YOUR LIVEWELL WATER IN THE GARBAGE CAN Then Proceed Immediately To The Dip Tank Line And Re-Fill Your Bag, Moving Down The Line Until You've Reached The Bump Master – DUMP YOUR BAG WATER AND HAND HIM THE BAG WITH YOUR FISH.
YOU WILL DISPOSE OF YOUR OWN DEAD FISH.



SPECIAL INSTRUCTIONS – LAKE ERIE IF NESSESARY

1. Consider using the foam pool noodles cut up into appropriate widths that match the surface area of your livewell. They will cushion the fish from rough water runs etc. We also have a drain plug in our boat to insert into our livewell overflow opening when making our trip in so we can fill our livewells closer to the lid. Remember you will have to switch your livewell to recirculate when it is full or your boat will fill up water.
2. Use livewell treatments, kosher salt is fine for this purpose as it is what's used by most DNR's. Commercial additives are fine as well but salts cheap. NEVER use more than the recommended concentration, too much of a good thing isn't. If using kosher salt (non-iodized salt) a maximum 5% by volume solution is best, of course you'll need to know the capacity of your livewell which is easily determine by pre-filling with a 5-gallon bucket and noting same on the underside of your lid/s. If you have a oxygenator you can only use certain additives. G Juice is most commonly used.
3. Ideally, you'll leave your livewell aerator run constantly when you've reached your boat limit or at least set the minimum off time with timed aerators.
4. On runs longer than 20 minutes, take time to stop and refresh your wells with new water before proceeding on as long as it is not in the bay preferably.
5. Learn how to "fizz your catch", instructions are on the website. Fish in distress are those that cannot maintain equilibrium and float on their side while in the livewell. Your other option is: **Fin Clips**. Designed as an alternative to fizzing, the Fin Clips gently attach to the anal and pelvic fins of fish to keep them upright, allowing their swim bladder to deflate naturally.
6. If you bring us a bunch of beat up, finned, or bleeding fish you can take them home. We will not weigh them your catch will be disqualified. You have more than enough time with our fishing hours that you will not need to run hard and not stop periodically to check on your fish.
7. Don't forget ice or frozen bottles for your livewell.





Remember not to go outside the marked boundaries. Anyone caught fishing outside of these area's will be immediately disqualified. Keep you trails on your GPS. You will need them if you are challenged.

